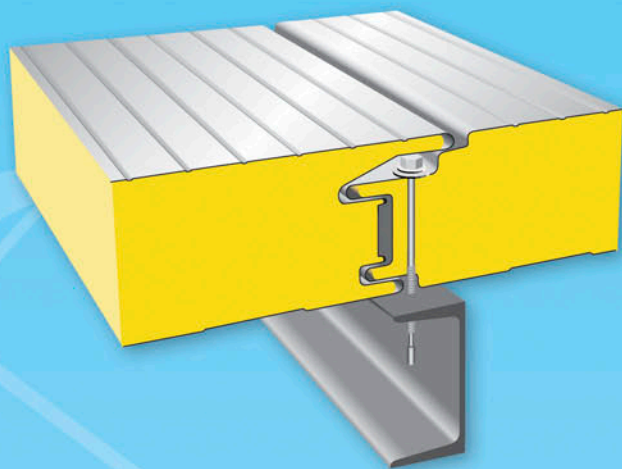


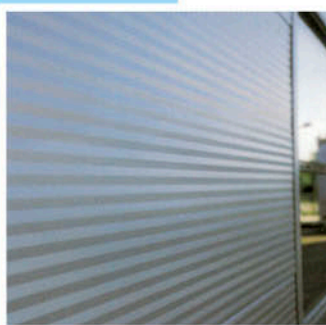
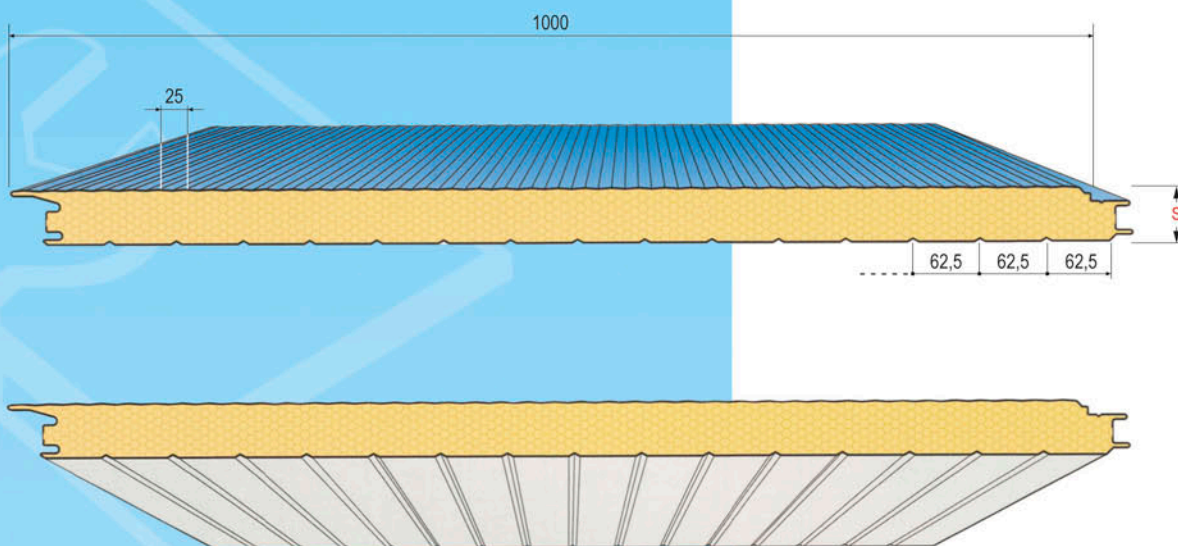
# STĚNOVÉ IZOLAČNÍ PANELE / S

## WALL INSULATING PANELS / S



**PUR / PIR**

*skryté kotvení*  
*concealed - fix*



tloušťka panelu [mm] / thickness of panel [mm]	40	60	80	100	120
hmotnost [kg/m <sup>2</sup> ] / weight [kg/m <sup>2</sup> ]	9,28	11,91	12,67	13,43	15,5
maximální délka [m] / max lenght [m]	14	18	18	18	18
modulová šířka [mm] / width [mm]	1000 - 1100				
součinitel U <sub>0</sub> [W/m <sup>2</sup> K] / heat conductivity coefficient [W/m <sup>2</sup> K]	0,43	0,29	0,22	0,18	0,15
požární odolnost / fire resistance	---	---	EW 30	EW 30	EW 30



Cooling tech  
Clean tech  
Special doors

**FRIGO  
MONT**  
Technology

PROJEKCE

DODÁVKA

MONTÁŽ

SERVIS

WWW.FRIGOMONT.CZ

ISO 9001:2009

5